

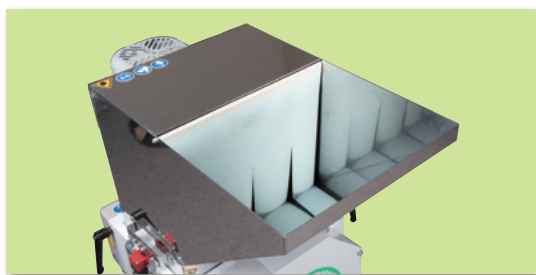
NEW

SPC III / GMt III SERIES

Our latest and renovated "**Gran Cutter**" contributes to reduce manufacturing costs.

Hopper Throat / Mouth on Main body

The frontage of Hopper Throat and Mouth on Main body changed to a rectangle from previous square type. It adapts to long sprue for the use of wide platens of injection molding machines.

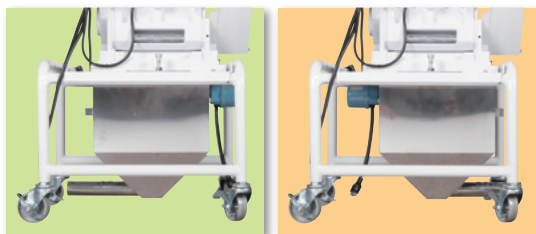


Safety design

Gran cutter works only when door is firmly closed and the hopper is installed.

Bin

6 liter suction bin is equipped as standard. Pull-out direction can be either forward or backward. We have improved the structure to be environmentally friendly at plants.



Datalink (optional)

Connect with Datalink to monitor Gran-cutter's operation and shutdown. It also helps to improve productivity by detecting bridged of sprue and runner.



TOTAL LINK

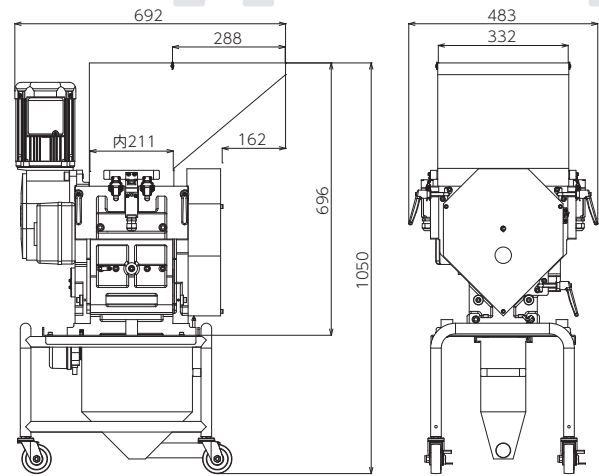
Datalink to realize solutions to the problems of "Improve productivity", "Shorten the mold changing time" and "Prevent human-errors" by Harmo Robot "connecting" with peripheral equipment.



For more details, please contact our office. [↑](#)

SPCⅢ-750

Model	SPCⅢ-C750	SPCⅢ-C750S
Power Input	3 phase AC200V (50/60Hz)	
Motor	0.75kw - 4P	
Rated current	3.2A/3.0A	
Rotating blade	176 mm diam., 4pcs 37.5rpm/50Hz 45rpm/60Hz	
Press cutter	2.8 × 4.5mm, 35pcs	
	150 times/min (50Hz) 180 times/min (60Hz)	112.5 times/min (50Hz) 135 times/min (60Hz)
Mouth on main body	211mm×330mm	
Hopper Throat	285mm×332mm	
Cutttable sprue diameter	8 mm diam. or less	
Disposing Capacity * Max per minute in intermittent feeding	150~200g	
Material tank volume	Approx. 6 ℓ	
Main unit weight	168kg	173kg

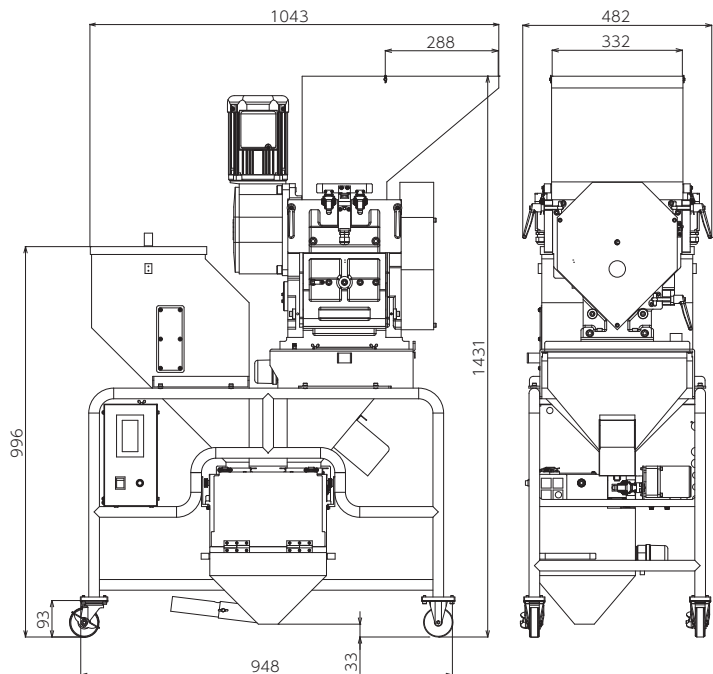


*1 The weight of material stored in the bin varies depending on the material type.

*2 The hard type Gran cutter's processing capacity is the measured value when cutting the sprue; 6-nylon with 20% glass fiber, max. 6 mm diameter and 4g-weight. The soft type Gran cutter's processing capacity is the measured value when cutting the sprue; thermoplastic elastomer, max. 6 mm diameter and 3g-weight.

GMtⅢ-750

Mixer model	GMtⅢ-C750	GMtⅢ-C750S
GRANCUTTER model	SPCⅢ-C750	SPCⅢ-C750S
Power Input	3 phase AC200V (50/60Hz)	
Motor	3 phase 750W	
Rated current	3.2A/3.0A	
Rotating Blade	176 mm diam., 4pcs 37.5rpm/50Hz 45rpm/60Hz	
Press cutter Numbers/ Dimension (mm)	2.8 × 4.5 35 blades	
	150 times/min (50Hz) 180 times/min (60Hz)	112.5 times/min (50Hz) 135 times/min (60Hz)
Mouth on main body	211mm×330mm	
Hopper Throat	285mm×332mm	
Cutttable sprue diameter	8 mm diam. or less	
Disposing Capacity * Max per minute in intermittent feeding	150~200g ■ Hard type PA with 20% glass fibers, max. 6 mm diam. and 4 g mass. ■ Soft type Elastomer resin, max. 6 mm diam. and 3 g mass.	
Supply motor output	3 phase 25W	
Measuring method	Controlling of the screw rotations	
Mixing method	Virgins and granulates, simultaneous feed	
Virgin Bin Capacity	50ℓ	
Mixing Bin Capacity	7ℓ	
Granulates Bin Capacity	8ℓ	
Main unit weight	207kg	212kg



* Refer to the table of SPCⅢ-750(S) regarding Gran cutter.

*1 The weight of material stored in the bin varies depending on the material type.

The certain amount of granulates should be accumulated in the tank so that the materials can be loaded to the mixing bin. The granulated material is stored as the excess storage in the cases below.

1. The amount of the fed runners exceeds the feeding capability of the GRANCUTTER screw.
2. The screw is stopped because the mixing bin is full.

When the granules is fully stored in the mixing bin, the unit issues a warning. Open the gate to manually discharge the excessive materials. The unit stops the operation after the set time has elapsed if the accumulated granules remain in the tank.

Manufacturer:

HARMO Co., Ltd.

ISO9001 CERTIFIED

INTERNATIONAL MARKETING DEPT.
4124-1, MINAMI-MINOWA KAMIINA-GUN NAGANO-PREF. 399-4595 JAPAN
TEL.+81-265-73-8820, FAX.+81-265-73-8964

<http://www.harmo-net.co.jp>