

Nipper adjuster tool

No screws or tools needed when adjusting the position of the nipper, reducing set-up time to **1/3! (in our comparison)**

■ Type of nipper adjuster tool

Type A

Recommended for customers who have many nipper changes or position adjustment



Type B

Recommended for customers who do not change the nipper but often adjust the position



Type C

Recommended for customers who do not have a nipper adjuster but want to change the nipper

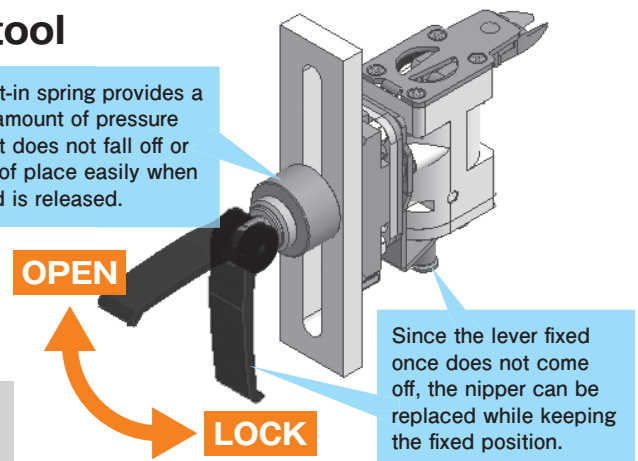


■ Function of the nipper adjuster tool

How to adjust nipper position (Type A/B)

- Adopting a cam lever lock function to easily adjust the position of the nipper without using screws or tools.
- Structure that prevents misalignment because it is fixed when the lever is pushed down
- One action allows the lever to be fixed and released, greatly contributing to the reduction of set-up time

The built-in spring provides a certain amount of pressure so that it does not fall off or slip out of place easily when the hand is released.



When attaching or detaching the nipper, pay attention to the blade of the nipper so as not to cut your hand

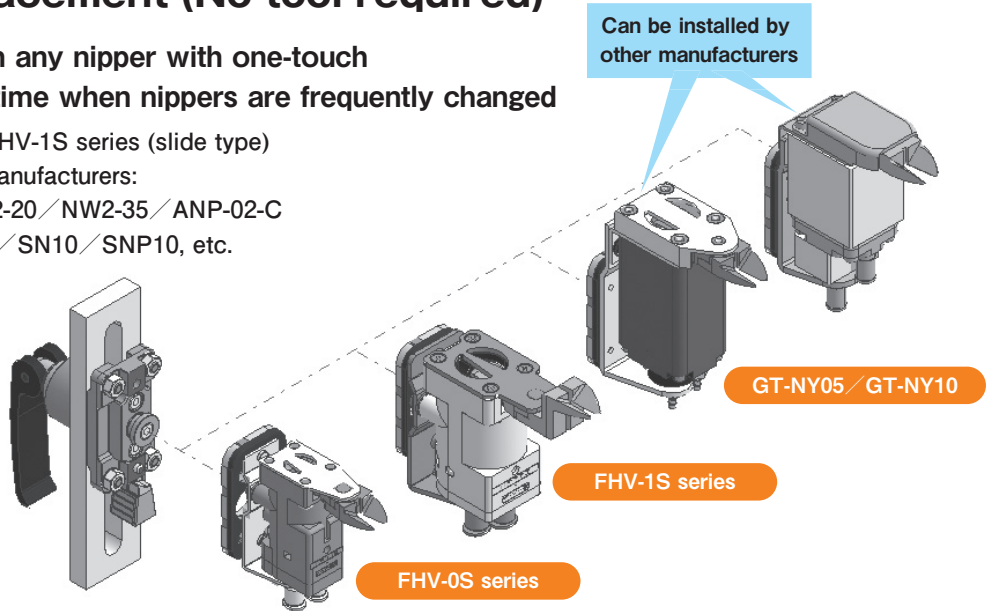
■ One-touch replacement (No tool required)

Able to attach or detach any nipper with one-touch
 Helps to reduce set-up time when nippers are frequently changed

- HARMO: FHV-0S series/ FHV-1S series (slide type)
- Can be installed to other manufacturers:
 GT-NY05 / GT-NY10 / NW2-20 / NW2-35 / ANP-02-C
 SN3 / SNP3 / SN5 / SNP5 / SN10 / SNP10, etc.

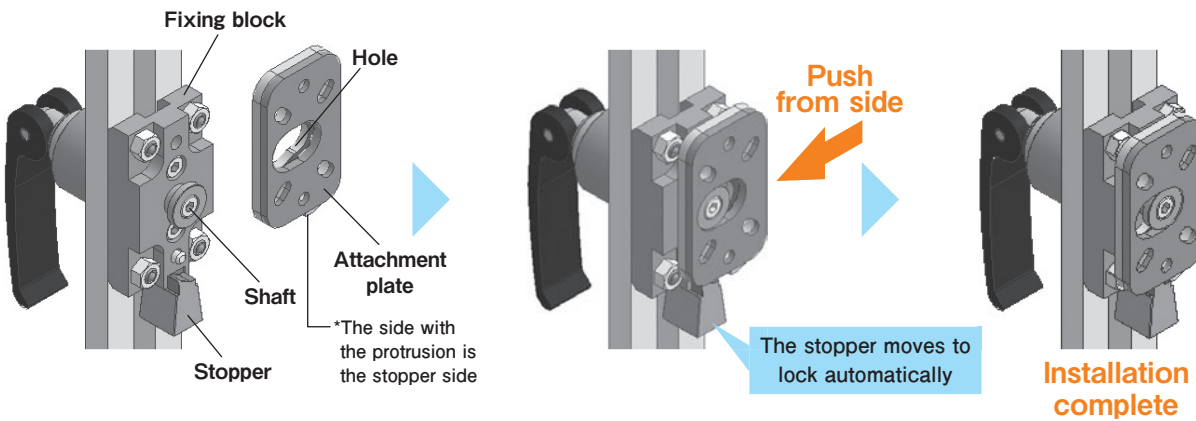
*Refer to the EOAT catalogue for installable nippers.

*Nipper are sold separately.

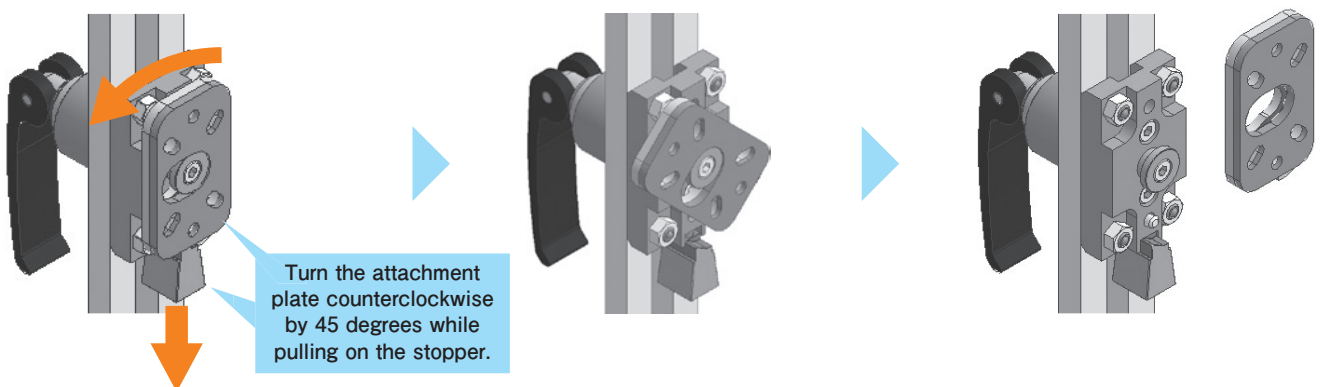


■ How to attach and detach nippers

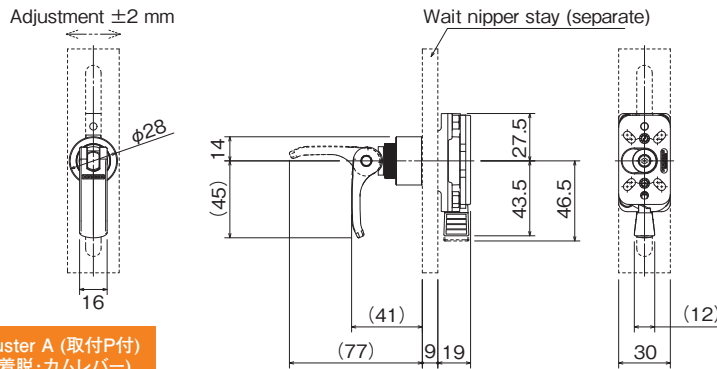
How to install



How to remove



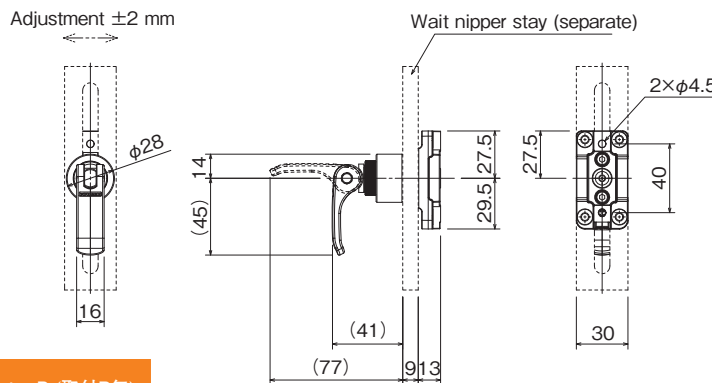
Type A (Nipper adjuster A)



Product name	Nipper adjuster A (取付P付) (ファンタッチ着脱・カムレバー)
Part code	*HNA-A



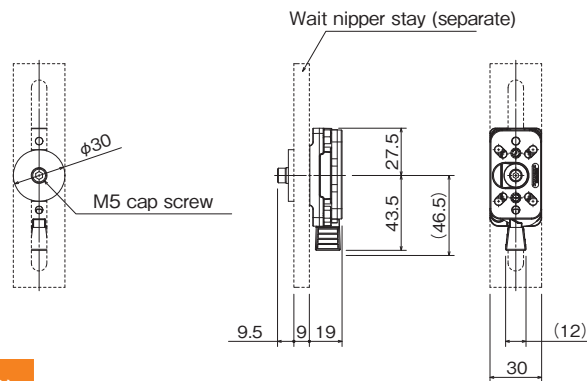
Type B (Nipper adjuster B)



Product name	Nipper adjuster B (取付P無)
Part code	*HNA-B



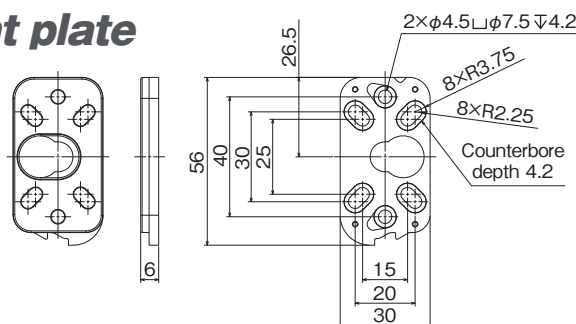
Type C (Nipper adjuster C)



Product name	Nipper adjuster C (取付P付)
Part code	*HNA-C



Nipper attachment plate



Product name	Nipper attachment plate
Part code	*NAP1

Type of installable nippers

- HARMO: FHV-0S series/ FHV-1S series (slide type)
- Can be installed by other manufacturers:
GT-NY05/GT-NY10, NW2-20/NW2-35, ANP-02-C, SN3/SNP3/SN5/SNP5/SN10/SNP10, etc.



*For other nippers, please refer to the separate drawing.